

Droughts Assessments

Assessments, analysis, forecasts and projections



Global and regional scale

Climate Change

Agriculture

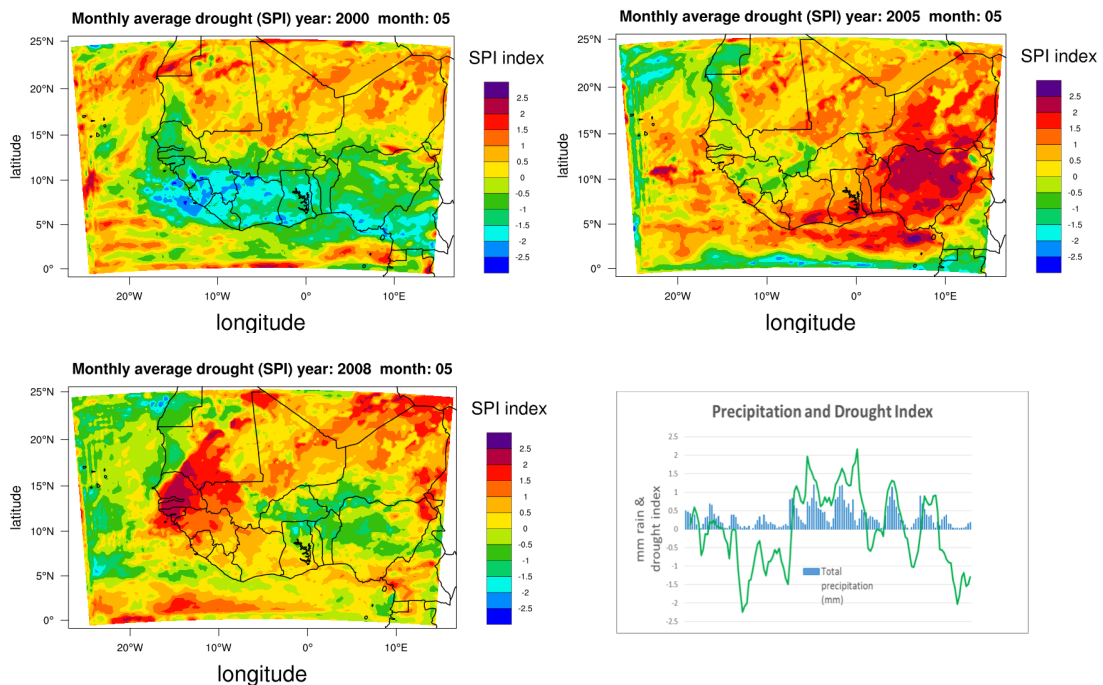
Food security



Creative thinking for innovation!

Climate change causes an increase in air temperature and impacts the hydrological cycle (IPCC 2014). **Drought assessments** provide information on whether a region will get **drier or wetter**. The impacts of drought may be unprecedented and could affect (1) the environment through **damages to plant and animals**, (2) economy though **loss of yield and livestock** in the agricultural sector and plant disease), (3) society by **destabilizing food security**.

MetClim can help you with drought assessments and projections.



We provide historical and future drought assessments using state-of-the-art modelling and statistical analysis tools. We can provide long term drought assessments under different climate change RCP scenarios (up to year 2100), which helps you understand if an area will get drier or wetter under a changing climate.