

Severe weather

Assessments, analysis, forecasts and projections



Gusts

Hurricanes

Fog

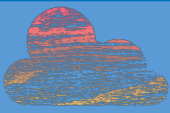
Lightning

Heavy rain

Turbulence

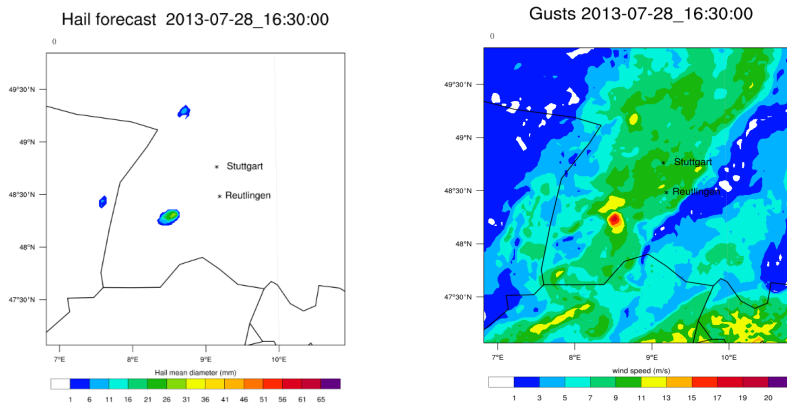
Global and regional scale

Creative thinking for innovation!

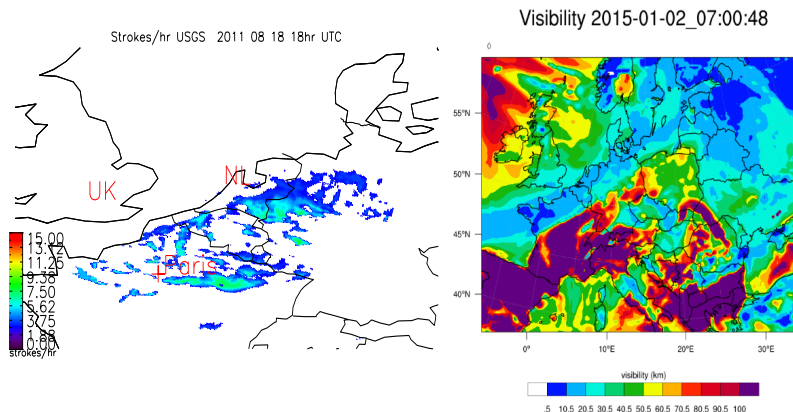


Severe weather assessments are becoming more important and can reduce **damages** and **save human lives**. Severe weather depends on atmospheric conditions and geographical locations. To understand which areas are frequently affected by **hailstorms, gusts, fogs, lightning, heavy precipitation, turbulence** and **hurricanes** we use state-of-the-art high resolution modelling tools.

MetClim can help you with severe weather assessments and forecasts.



Hail calculations (left) together with gust calculations for the southern part of Germany (right).



Lightning calculations for Benelux (left) together with visibility (fog) calculations for Europe (right).

We provide historical and future severe weather assessments. We can provide long term assessments under different climate change RCP scenarios (up to year 2100) that will help you prepare for future severe weather conditions.